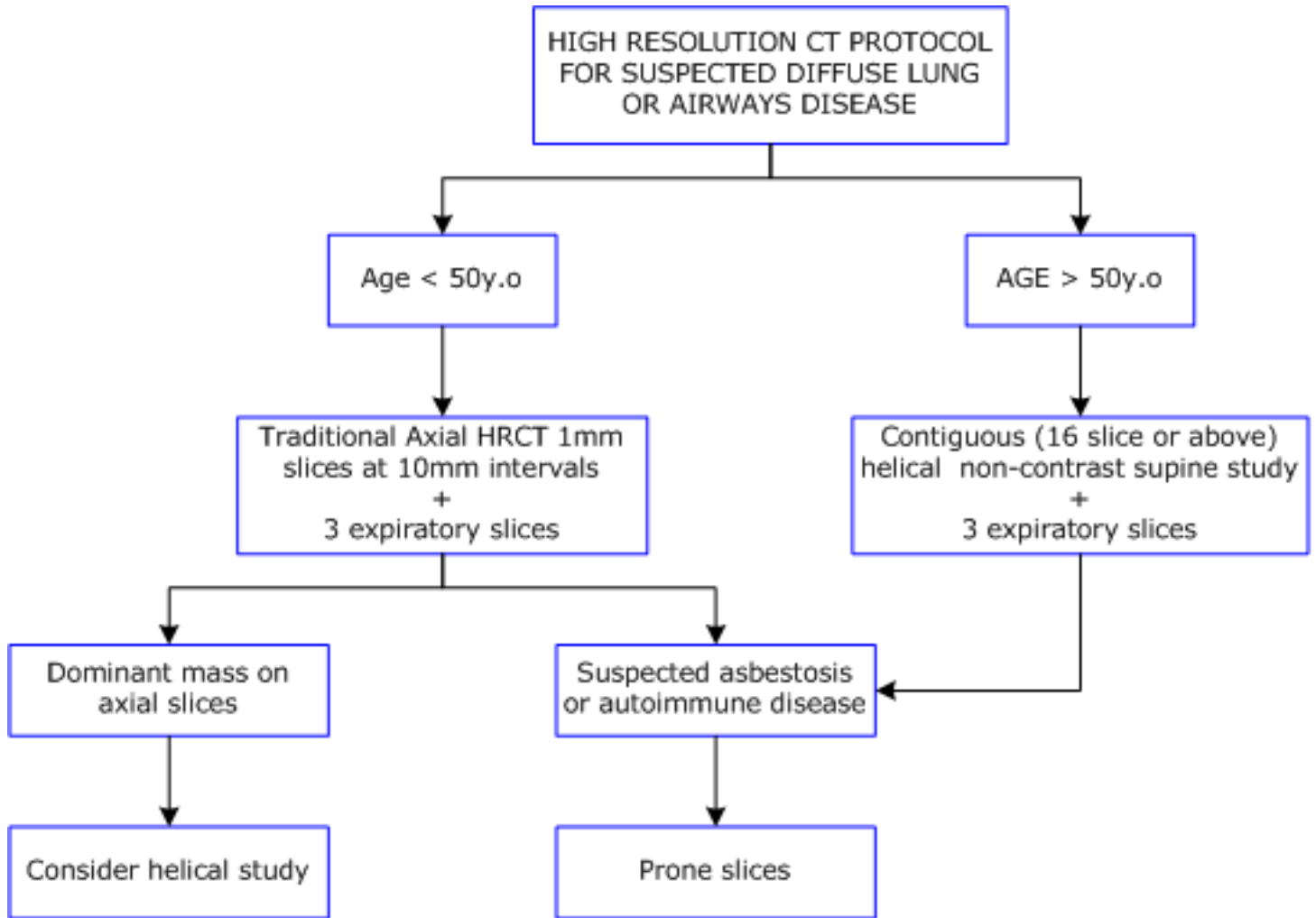


# Diagnostic Imaging Pathways - HRCT Protocol for Diffuse Lung or Airways Disease



There is no published guideline that clearly defines the HRCT protocol used to evaluate diffuse lung disease. This is the protocol recommended by our institution, which is similar to that used in some studies. For further reading:

1. Aziz ZA, Padley SP, Hansell DM. CT techniques for imaging the lung: recommendations for multislice and single slice computed tomography. *Eur J Radiol.* 2004; 52(2):119-36.

Date reviewed: July 2014

Date of next review: 2017/2018

Published: July 2014



## File Formats

Some documents for download on this website are in a Portable Document Format (PDF). To read these files you might need to download Adobe Acrobat Reader.



[Legal Matters](#)