



## Computerised Tomography (CT) Scan

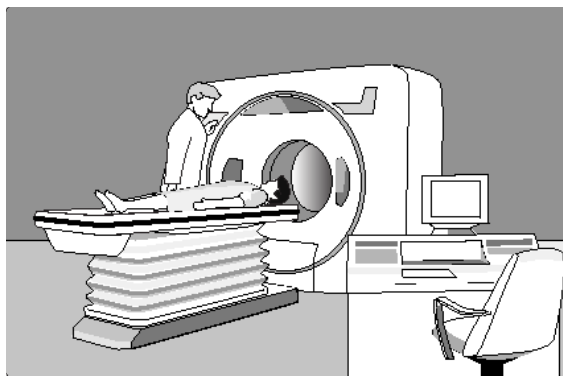
This brochure tells you about a CT Scan, the benefits and the risks, what happens before, during and after having a CT Scan.

### What is a CT Scan (CAT scan)?

A CT (Computerised Tomography) scanner uses x-rays (a special type of radiation) and a computer to make pictures of the inside of your body. It is similar to a plain x-ray however it takes lots of pictures of a section (cross sections) of your body instead of just one.

You may be asked to drink a special liquid or be given a special x-ray dye by an injection.

The scanner has a round opening in the centre and a flat bed for you to lie on. While you are lying on the bed, it will slowly move you into the opening where the pictures are taken. The movement is controlled by the CT staff.



### Benefits of CT Scans

- Used for diagnosis to show **detail** of parts inside your body, such as the lungs, brain, abdominal organs, bones and blood vessels.
- Can be used to look at parts inside your body instead of using surgery.
- Although CT scans use radiation, no radiation is left in your body after the scan is finished
- Painless, accurate and fast

## Risks of a CT Scan

Your doctor knows the risks of having a CT scan. Your doctor will consider the risks before recommending you to have a CT scan. Possible risks are:

- Not recommended for pregnant women.
- Small amount of radiation. The amount of radiation you are exposed to depends on the number of pictures taken and the part of the body being examined.
- **Extremely small** chance you could develop cancer in the long term from the radiation.

If you are having a x-ray dye, there is a small risk of:

- An allergic reaction. You may have nausea, sneezing, vomiting, itching, hives.
- Infection at the site of an injection

If you have any allergies, tell the CT staff or radiology doctor.

If you are concerned about the risks, talk to your doctor before the examination.

## Preparation for the CT Scan

- Bring your referral letter or request form and all x-rays taken in the last 2 years with you.
- Leave the x-rays with the radiology staff as the doctor may need to look at them. The radiology staff will tell you when these are ready to be picked up.
- Wear comfortable, loose clothing.
- Leave all jewellery and valuables at home.

If you are having 'dye':

- You may be asked not to eat or drink for a few hours before the CT scan.

### **Important to tell your doctor before the scan**

- If you are or may be pregnant
- If you are having 'dye' tell the staff about any allergies and medical conditions you have, including asthma, diabetes, heart disease, kidney disease or thyroid problems. Also, tell them about any medications you are taking.

Just before the CT Scan:

- You may be given a gown to wear.
- You may be asked to remove any metal objects.

## Consent

You have the right to refuse an examination and may do so if you wish. You may be asked to complete a consent form.

## What happens during a CT Scan?

Staff will ask you to lie on the bed, either flat on your back or on your side or stomach. Straps or pillows may be used to help you keep still during the scan, however you will be able to remain comfortable.

If you are having dye injected:

- CT staff will put a needle into a vein in your hand or arm.
- A salt water fluid may be passed through the needle so that it does not become blocked.

Possible side effects of the 'dye':

- You may feel a slight stinging sensation and a warm flushing feeling for a few seconds.
- Metallic taste in mouth
- You may feel like you are wetting your pants, **but you will not be.**

The staff will leave the room and control the movement of the bed from behind a screen. They will see, hear and speak to you at all times. You will be able to speak to them at all times. They will tell you what is happening, when to hold still and if you need to take a deep breath and hold it. If you get stiff, need to move or are feeling closed in (claustrophobic), tell the staff.

The CT staff will use a remote control to slowly move you into the opening of the CT scanner.

When the scanning is finished you will be asked to wait while the staff check the pictures.

The scan including getting you ready on the table takes between 10 to 30 minutes.

## When will I get the results?

The amount of time it takes for you to get your results will differ depending on where you get your scans done. The radiology doctor will look at the pictures and write a report. The pictures may be on films or on a CD.

Ask whether you should wait to take the pictures and report with you, or whether they will be sent to your doctor.

Your doctor will need to discuss the report with you. You will need to make an appointment to do this.

## After the CT scan

You will be able to leave soon after the CT scan is finished and can continue with normal activities.

If you had 'dye':

- Staff will need to take out the needle if it is still in your arm.
- Staff will give you any special instructions.
- The dye will pass out of your body in your urine. You will not notice it as it is colourless.
- Drink plenty of fluid to help get rid of the dye.

## Costs

The costs of CT will depend on exactly what is needed and where the scan is performed. When you ring to book your scan, you may wish to ask if it will cost you anything. Otherwise, you can ask staff when you go to have your scan.

## Further Information

For more detailed information on a CT scan, please see the [Computed Tomography](#) brochure from [Inside Radiology](#), a resource produced especially for consumers by the [Royal Australian and New Zealand College of Radiologists](#).

If you would like to look at other relevant brochures, please see

- [Radiation risks of x-rays and scans](#)

Or log into the Diagnostic Imaging Pathways website - [www.imagingpathways.health.wa.gov.au/includes/consumer.html](http://www.imagingpathways.health.wa.gov.au/includes/consumer.html)

Or

If you have questions or require any further information please contact your doctor or speak to the staff where you are going to have your procedure.

## **Consumer Participation**

This information has been reviewed by representatives from the following groups:

- Aboriginal people
- People with disabilities
- Seniors
- CALD (Culturally and Linguistically Diverse)
- The Health Consumers' Council.

## **Feedback**

The Division of Imaging Services, Royal Perth Hospital is committed to providing a friendly and professional service. If you would like to provide feedback on this information sheet, please send to:

Quality Coordinator  
Imaging Services  
Royal Perth Hospital  
GPO Box X2213  
Perth WA 6000

### **Website**

For more information go to [www.imagingpathways.health.wa.gov.au](http://www.imagingpathways.health.wa.gov.au)

### **Copyright**

© Copyright 2009, Department of Health Western Australia. All Rights Reserved.

This web site and its content has been prepared by The Department of Health, Western Australia. The information contained on this web site is protected by copyright.

### **Legal Notice**

Please remember that this leaflet is intended as general information only. It is not definitive and The Department of Health, Western Australia can not accept any legal liability arising from its use. The information is kept as up to date and accurate as possible, but please be warned that it is always subject to change.

