



DIAGNOSTIC IMAGING PATHWAYS

www.imagingpathways.health.wa.gov.au

User Guide

Introduction

Diagnostic Imaging Pathways (DIP) © utilises a web-based interface. The following is a brief guide on how to use the website, as well as a description of the major features of the application. Any specific queries/suggestions can be directed towards the information technologists at dipfeedback@health.wa.gov.au.

Below is a screenshot of the homepage. All of the navigation is done via the main menu on the left hand side of the screen.

Government of Western Australia
Department of Health

Delivering a Healthy WA

Search: GO

Diagnostic Imaging Pathways

A Clinical Decision Support Tool and Educational Resource for Diagnostic Imaging

Editor :

- Clinical Professor Richard Mendelson

Manager :

- Dr Phillip Bairstow

Web Development :

- Mr Robert Long

Research Fellow :

- Dr Fan Zhang

GP advisor :

- Dr Jacquie Garton-Smith

[Editorial Panel](#)

[Contributors](#)

[New Radiation Training Module](#)

Last Updated: December 2011. [What's New.](#)

The main focus of the website is the 'Imaging Pathways' which can be accessed from the menu bar as demonstrated below. The 'Cardiovascular' menu is highlighted in this case.

Government of Western Australia
Department of Health

Delivering a Healthy WA

Search: GO

Diagnostic Imaging Pathways

A Clinical Decision Support Tool and Educational Resource for Diagnostic Imaging

Editor :

- Clinical Professor Richard Mendelson

Manager :

- Dr Phillip Bairstow

Web Development :

- Mr Robert Long

Research Fellow :

- Dr Fan Zhang

GP advisor :

- Dr Jacquie Garton-Smith

[Editorial Panel](#)

[Contributors](#)

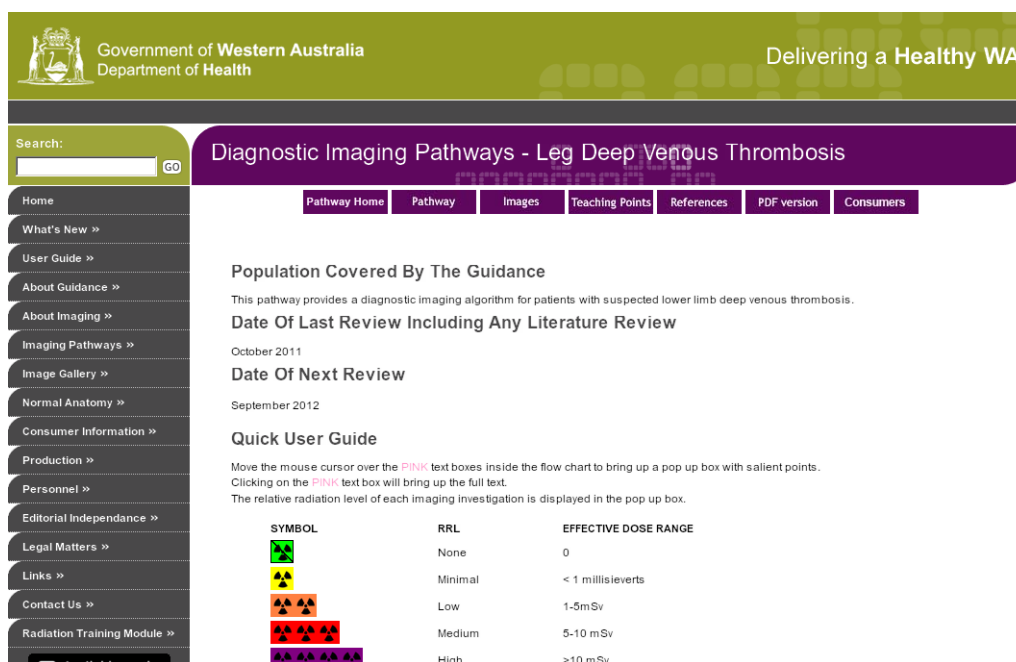
[New Radiation Training Module](#)

Last Updated: December 2011. [What's New.](#)

Once a field has been selected, a list of the available pathways is provided.



Selection of one of the pathways (in this case Leg Deep Venous Thrombosis) displays the relevant Home Page.



On the Pathway Home Page, there are a number of links displayed at the top:

- **Pathway Home** - This returns the user back to the Pathway Home page.
- **Pathway** - This displays the pathway itself. Simply mouse over the pink boxes to see more information or left click on the box to be taken to a new browser page for details.
- **Images** - This shows the relevant images associated with the pathway, as well as a short description of the image.
- **Teaching Points** - This displays major 'teaching concepts' about the pathway.
- **References** - This link will show the references drawn upon in the formulation of the pathway.
- **PDF Version** - This link will take the viewer to a PDF version of the pathway.
- **Consumers** - This link will take the viewer to information for patients and carers.

Pathways

This is the main feature of the website. By hovering the mouse cursor over the pink boxes, additional information will appear in pop-up boxes. Left clicking the pink boxes will open a webpage containing more detailed text.

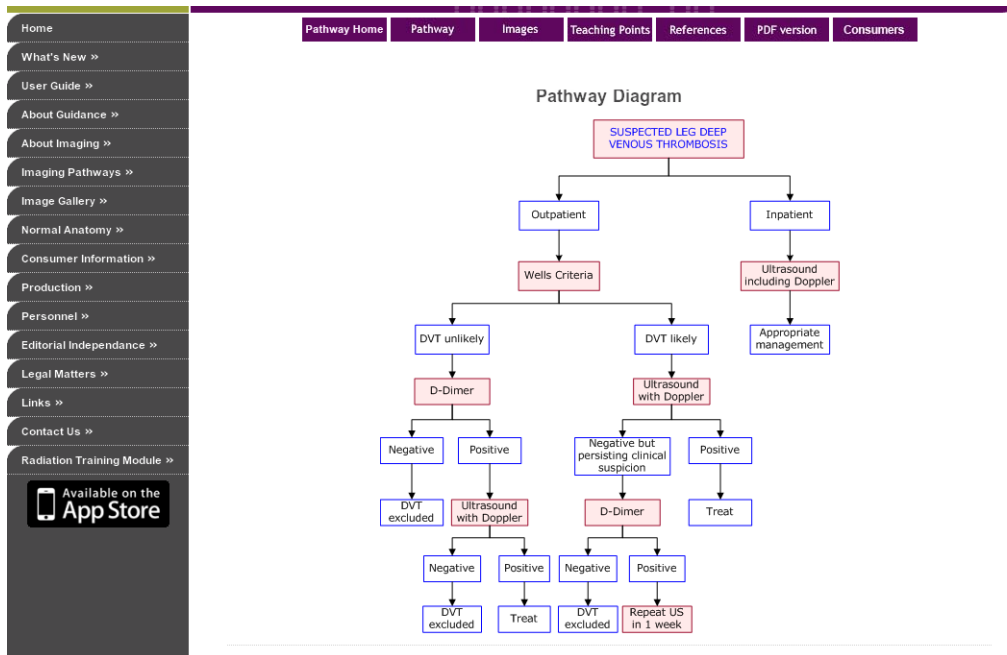


Image Gallery

There is a link on the main menu labelled 'Image Gallery'. This displays a list of all pathways that have associated images. From this page, simply select one of the options and all of the related images will be displayed.



Clicking on an image will bring up the full sized image in a new browser window.

The screenshot shows the 'Diagnostic Imaging Pathways - Leg Deep Venous Thrombosis' page. The header includes the Government of Western Australia Department of Health logo and the slogan 'Delivering a Healthy WA'. A search bar is located at the top left. The main navigation menu on the left includes links for Home, What's New, User Guide, About Guidance, About Imaging, Imaging Pathways, Image Gallery, Normal Anatomy, Consumer Information, Production, Personnel, Editorial Independence, Legal Matters, Links, Contact Us, and Radiation Training Module. The main content area features a purple header with the title and a navigation bar with links for Pathway Home, Pathway, Images, Teaching Points, References, PDF version, and Consumers. Below this is the 'Image Gallery' section, which displays two ultrasound images labeled '1a' and '1b'. The text next to the images reads: 'Image 1a and 1b (Doppler Ultrasound): Acute thrombosis is indicated by the distended and hypochoic lumen of the common femoral and external iliac veins with no flow.' Below the images is a 'File Formats' section with a note about PDF documents and a link to 'Legal Matters'.

Normal Anatomy

DIP also offers users an interactive image gallery of normal radiological anatomy. This can be accessed by selecting the 'Normal Anatomy' link from the main menu followed by an organ system of interest.

The screenshot shows a browser window displaying the '3D Skull' interactive image gallery. The page title is '3D Skull' and it has buttons for 'ABOUT', 'RELATED IMAGES', and 'CLOSE'. The main content area features a large 3D model of a human skull in the center. To the right of the main model are four smaller 3D models showing different views: 'AP View', 'Lateral View', 'SI View', and 'SI Open View'. At the bottom of the main model, there is a text box that reads: 'CLICK to STOP the movie. Then use the Mouse SCROLL-WHEEL or the UP and DOWN Keys to manually control the clip.' The footer of the page includes the text 'Created by Kym Starovich and Chad Vickers. © All Rights Reserved 2007. Department of Health WA.' and a link to 'Cervical Spine - Lateral'.

Consumer Information

By selecting 'Consumer Information' from the main menu, users have access to information on the imaging pathways, modalities and patient safety, especially prepared for patients and carers.

More Information

For further information or if you would like to provide feedback, please contact us at dipfeedback@health.wa.gov.au.

User Guide last updated December 2011.

Website

For more information go to www.imagingpathways.health.wa.gov.au

Copyright

© Copyright 2009, Department of Health Western Australia. All Rights Reserved.

This web site and its content has been prepared by The Department of Health, Western Australia. The information contained on this web site is protected by copyright.

Legal Notice

Please remember that this leaflet is intended as general information only. It is not definitive and The Department of Health, Western Australia can not accept any legal liability arising from its use. The information is kept as up to date and accurate as possible, but please be warned that it is always subject to change.

